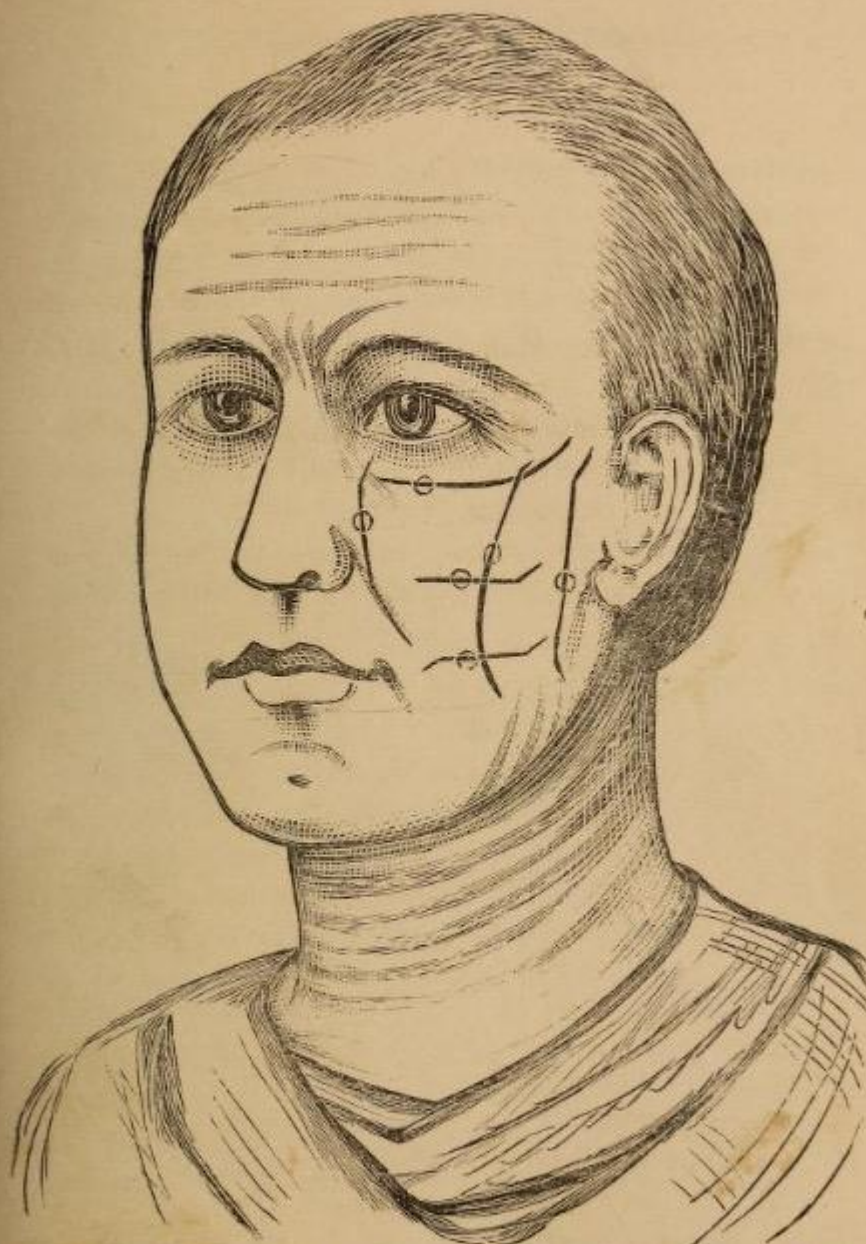


Книга Фробिशера: полное руководство по искусству макияжа лица для сцены; Включая инструкции по использованию париков, бород, усов и всех видов искусственных волос и т. Д. По использованию актеров, оперных певцов, любителей и публики.

CONTENTS.

	PAGE.		PAGE.
Preface,	3	COMIC CHARACTERS—Nose,	
The Make-up Box and		Mouth, Chin, Forehead,	
Contents,	8	Eye-brow, Teeth,	29
Preliminary Suggestions,	11	HUMORIST—Tipsey Man,	
Putting on the Wig,	11	Drunkard,	31
Stage Faces,	12	Wigs, Beards, etc.,	32
Juvenile Face, Directions,	13	Old Age,	32
Ladies' Juvenile Face,	17	Color of Beard,	33
Middle Age,	18	Size and Shape of Beard,	33
A Pale Face,	19	Making the Beard,	34
Advanced Age,	20	The Eye-brows,	35
Old Age,	20	To Remove Grease Paints	
Decrepitude—Dotage,	23	from Face,	35
Amateurs and Beginners,	24	An Epitome of Make-Ups,	37
A Good Stage Face,	25	Youth, Manhood, Old	
Hollow Face,	25	Age,	37
Full Face,	25	Grease Paints and Mate-	
Prominent Nose,	26	rials,	38
Heavy Eyebrows,	26	Hints on Acting, Instruc-	
The Eye,	26	tion,	40
The Mouth,	26	How to Speak in a Thea-	
Free Mouth,	27	tre,	41
Forehead,	27	Rehearsals,	42
Thin Face,	28	Society and Acting,	43
Comic Face,	28	Practice,	44

DIVISION LINES OF THE FACE.



The perpendicular lines denote the place of color for the size of the face from thin to thick.

The horizontal lines denote the place of color for the age of the face, from youth to old age.

The lines from the eyes and nose, and on the forehead, neck and cheek-bone, denote the places of shadows, wrinkles and linings.

13.—Hollow, a little, the bridge of the nose and tip of chin, and temples.

14.—Elevate the brows, and shade irregularly the wrinkles.

15.—Raise, or depress, as required, the skin of the entire face, and paint lines as needed, and, also, line the lower jaw, and the creases of the neck. All this done on the dry surface, after liquid.

15.—Powder over all your work and dust off.

GREASE PAINTS AND MATERIALS.

- 1.—Pale flesh color.
- 2.—Light flesh.
- 3.—Natural.
- 4.—Rosy.
- 5.—Darker rose.
- 6.—Sunburnt.
- 7.—Dark sunburnt.
- 8.—Sallow.
- 9.—Healthy manhood.

YOUTH TO MANHOOD.

- 10.—Sallow.
- 11.—Ruddy.
- 12.—Olive.
- 13.—Olive lighter.
- 14.—Gypsy.
- 15.—Moor.
- 16.—Chinese.
- 17.—N. A. Indian.
- 18.—East Indian.

OLD AGE.

Each 50 and 25 cents.

GREASE PAINT PENCILS.

White, for graying eyebrows and hair.

Black, for eyebrows, mustache, etc.

Gray or Slate, for hollow cheeks, temples, etc.

Brown, for wrinkles.

Light flesh, shade added to brown wrinkles.

Red or Maroon for rouge, old men.

Carmine, for brows, etc., when red wig is worn.

Black and Red, 20 cents; *other colors*, 10 cents.

CREAM EXORAS—(LADIES.)

- 1.—White.
- 2.—Rose.
- 3.—Brunette. (Grease paints, soft.)

Each 50 cents.